

Robert Coleman Esq. in  
right of Jacob Giles

Thomas B. Coleman in  
right of Simon Bratz.

T-43

Henry B. Grubb decd in  
right of George Churchman.

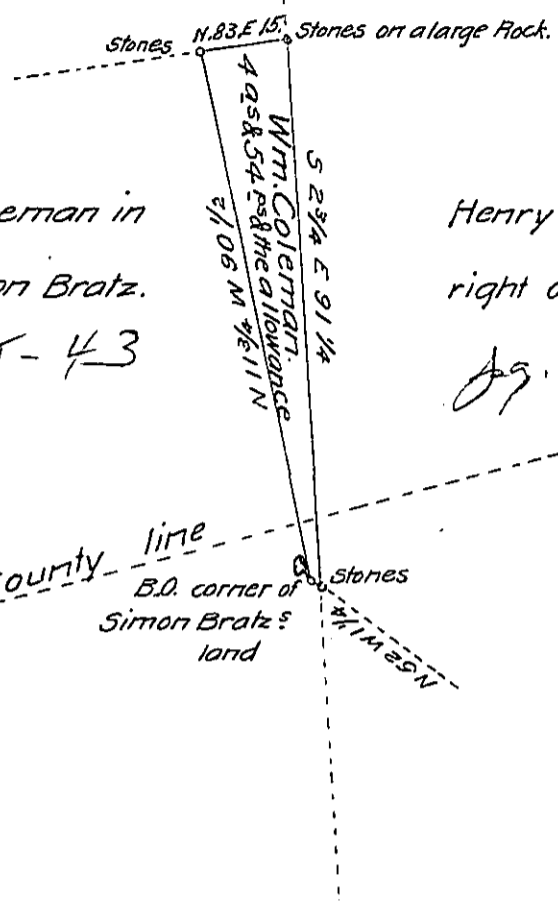
Ag. 161

Kochs tavern on  
the county line



County line

B.D. corner of  
Simon Bratz's  
land



A draught of a tract of land situate partly in Rapho Township Lancaster and partly in Lebanon Township Lebanon County, containing four acres and fifty four perches and the usual allowance of six P. Cent for roads &c. Surveyed in pursuance of a warrant bearing date the 9<sup>th</sup> day of March Anno Domini 1825 granted to William Coleman March 10<sup>th</sup> 1825.

Pr. Jacob Hibshman D.S.

Pr. Tobias Kreider Jr. D.S.

To Gabriel Hiester Esq.

Surveyor General.

IN TESTIMONY that the above is a copy of the original remaining on file in the Department of Internal Affairs of Pennsylvania, made conformably to an Act of Assembly approved the 16th day of February, 1833, I have hereunto set my Hand and caused the Seal of said Department to be affixed at Harrisburg, this seventh day of July 1904

*Leach R. Brown*  
Secretary of Internal Affairs.